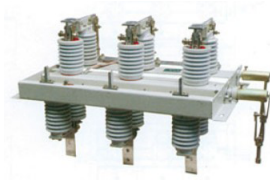


GN30-12(D) Indoor High-Voltage AC Isolating Switch



1 Product overview

1.1 Main applications:

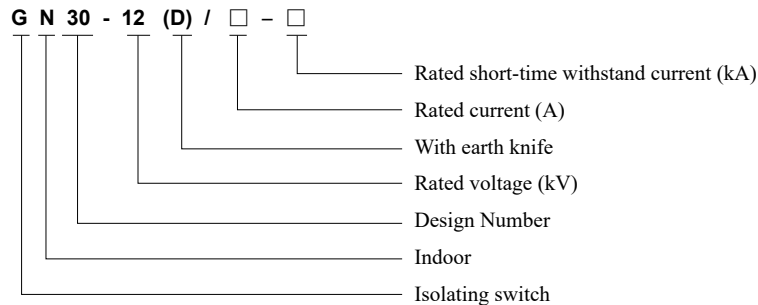
GN30-12(D) indoor high-voltage isolating switch is a new rotary contact knife type isolating switch, used in the AC 50Hz power system with rated voltage of 12kV and below for losing and opening circuit under the voltage without load. The entire product structure is located on two upper and lower planes of the three-phase common bottom frame with two sets of fixed insulator and contact to turn on and off the switch by rotating the contact knife. The product features with compact design, small occupation space, strong insulation capacity, and easy installation and adjustment.

1.2 Available standards

GB/T 1985-2014 High-voltage alternating-current disconnectors and earthing switches

GB/T 11022-2011 Common specifications for high-voltage switchgear and controlgear standards

2 Type designation



3 Product parameters

Product Model & Spec.		GN30-12/400-12.5		GN30-12/630-20		GN30-12/1000-31.5		GN30-12/1250-31.5	
		GN30-12D/400-12.5		GN30-12D/630-20		GN30-12D/1000-31.5		GN30-12D/1250-31.5	
Item									
Rated voltage (kV)		12							
Rated current (A)		400		630		1000		1250	
4S rated short-time withstand current (kA)		12.5		20		31.5			
Rated peak withstand current (kV)		31.5		50		80			
Rated insulation level	Power frequency withstand voltage for 1 minute (kV)	Phase-phase voltage, voltage to ground:42; Break voltage:48							
	Lightning impulse voltage (kV)	Phase-phase voltage, voltage to ground:75; Break voltage:85							

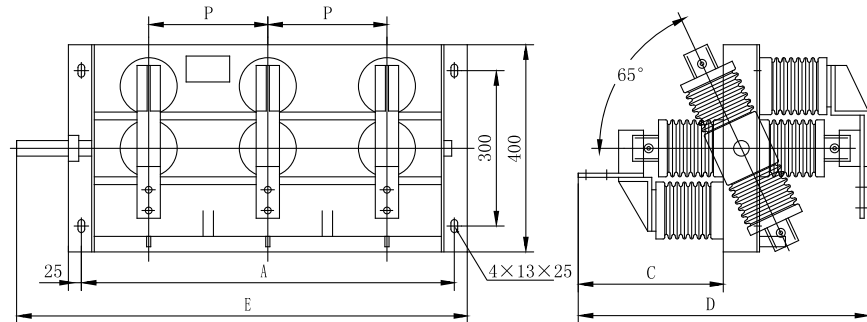
4 Working environment conditions

- 4.1 Ambient temperature: Upper limit: +40°C; Lower limit: -15°C;
- 4.2 The altitude does not exceed 1000m.
- 4.3 For relative air humidity, the daily mean is not greater than 95%, and the monthly mean is not greater than 90%;
- 4.4 The earthquake intensity does not exceed 8 degrees.
- 4.5 Installed in places free of fire, explosive risk, chemical corrosion, and violent vibration.
- 4.6 The installation site shall be free of flammable substance, explosive risk, chemical corrosion and violent vibration.
- 4.7 Pollution grade: Grade II.

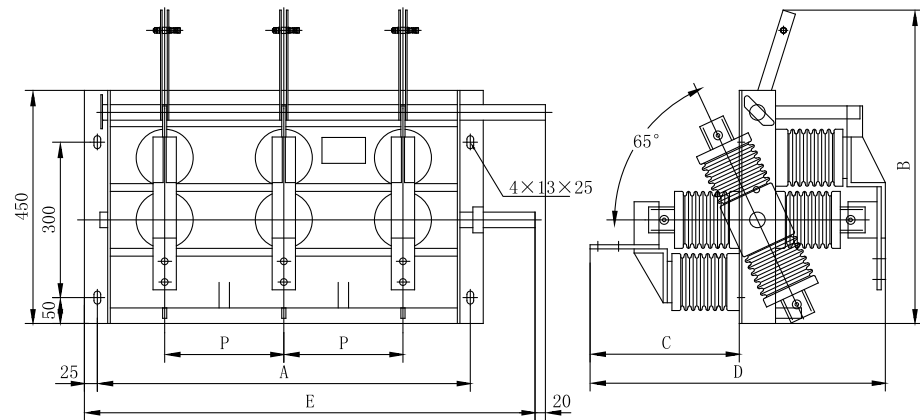
Please contact the manufacturer for customizing those failed to follow the normal working conditions.

GN30-12(D) Indoor High-Voltage AC Isolating Switch

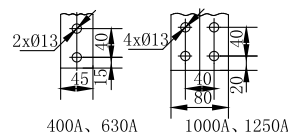
5 Outline and installation dimensions



GN30-12

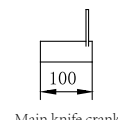


GN30-12D

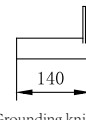


400A、630A 1000A、1250A

Terminal installation dimensions



Main knife crank



Grounding knife crank

Model	210					230					250				
	A	B	C	D	E	A	B	C	D	E	A	B	C	D	E
GN30-12/400、630	680	615	282 (Parallel on both sides) 363 (Vertical on one side) 665 (Vertical on both sides)	510 (Parallel on both sides) 575 (vertical on one side) 665 (Vertical on both sides)	820	720	615	282 (Parallel on both sides) 363 (Vertical on both sides)	510 (Parallel on both sides) 575 (vertical on one side) 665 (Vertical on both sides)	860	760	615	282 (Parallel on both sides) 363 (Vertical on both sides)	510 (Parallel on both sides) 575 (vertical on one side) 665 (Vertical on both sides)	900
GN30-12/1000															
GN30-12/1250															
GN30-12D/400、630	680	615	282 (Parallel on both sides) 363 (Vertical on one side) 665 (Vertical on both sides)	510 (Parallel on both sides) 575 (vertical on one side) 665 (Vertical on both sides)	820	720	615	282 (Parallel on both sides) 363 (Vertical on both sides)	510 (Parallel on both sides) 575 (vertical on one side) 665 (Vertical on both sides)	860	760	615	282 (Parallel on both sides) 363 (Vertical on both sides)	510 (Parallel on both sides) 575 (vertical on one side) 665 (Vertical on both sides)	900
GN30-12D/1000															
GN30-12D/1250															

GN30-12(D) Indoor High-Voltage AC Isolating Switch

6 Order technology confirmation form

Order Technology Confirmation Form for GN30-12(D)

Determine your requirements according to the items listed in table below:

Product model	<input type="checkbox"/> GN30-12	
	<input type="checkbox"/> GN30-12D	
Order Qty. (pcs)		
Rated current (A)	<input type="checkbox"/> 630 <input type="checkbox"/> 1000 <input type="checkbox"/> 1250 <input type="checkbox"/> Others_____	
Phase distancing (mm)	<input type="checkbox"/> 210 <input type="checkbox"/> 230 <input type="checkbox"/> 250 <input type="checkbox"/> 275 <input type="checkbox"/> Others_____	
Operating direction	<input type="checkbox"/> Left operation <input type="checkbox"/> Right operation	
Short-time withstand current (kA)	<input type="checkbox"/> 20 <input type="checkbox"/> 25 <input type="checkbox"/> 31.5	
Installation location	<input type="checkbox"/> Installed on the top of the circuit breaker <input type="checkbox"/> Installed on the bottom of the circuit breaker	
Grounding device	<input type="checkbox"/> No <input type="checkbox"/> Yes	
Auxiliary switch	Main knife	<input type="checkbox"/> No (standard configuration) <input type="checkbox"/> Yes: __OFF__ON
	Grounding knife	<input type="checkbox"/> No (standard configuration) <input type="checkbox"/> Yes: __OFF__ON
Outgoing terminal wiring method	<input type="checkbox"/> Parallel on one side and vertical on one side (standard configuration) <input type="checkbox"/> Parallel on both sides <input type="checkbox"/> Vertical on both sides	
Other instructions	1. With CS6-1 manual operating mechanism as standard configuration; 2. All linkages between the isolating switch bodies and the operating mechanism are provided by user;	
Other special requirements		Ordering unit (seal) Sign: Confirmation date: Tel:

Note: If not ticked, all options shall be manufactured according to the TENGENT's standard configurations.